



Smart Control Center

User Guide

350 East Plumeria Drive
San Jose, CA 95134
USA

November 2010
202-10685-01
v1.0

©2010 NETGEAR, Inc. All rights reserved.

No part of this publication may be reproduced, transmitted, transcribed, stored in a retrieval system, or translated into any language in any form or by any means without the written permission of NETGEAR, Inc.

Technical Support

Thank you for choosing NETGEAR. To register your product, get the latest product updates, or get support online, visit us at <http://support.netgear.com>.

Phone (US & Canada only): 1-888-NETGEAR

Phone (Other Countries): See Support information card.

Trademarks

NETGEAR, the NETGEAR logo, ReadyNAS, ProSafe, Smart Wizard, Auto Uplink, X-RAID2, and NeoTV are trademarks or registered trademarks of NETGEAR, Inc. Microsoft, Windows, Windows NT, and Vista are registered trademarks of Microsoft Corporation. Other brand and product names are registered trademarks or trademarks of their respective holders.

Statement of Conditions

To improve internal design, operational function, and/or reliability, NETGEAR reserves the right to make changes to the products described in this document without notice. NETGEAR does not assume any liability that may occur due to the use, or application of, the product(s) or circuit layout(s) described herein.

Revision History

Publication Part Number	Version	Publish Date	Comments
202-10685-01	v1.0	November 2010	First publication

Table of Contents

Chapter 1 Getting Started

- Smart Control Center Installation6
- Discovering Devices8
- Utility Features Overview9
 - Network9
 - Maintenance9
 - Tasks9
 - Adapter9
 - Help10
 - Quit10
- Uninstall the Utility11

Chapter 2 Network

- Network Features13
 - DHCP Refresh13
 - Reboot Device14
 - Web Browser Access15
 - Configure Device16
 - Change Password17

Chapter 3 Maintenance

- Configuration19
- Firmware Upgrade20

Chapter 4 Tasks

- Delete Prior Tasks22
- Delete One Task23
- Reschedule Task24

Chapter 5 Adapter

- Adapter Overview26

Chapter 6 Help

- Online Help28
 - User Guide28
 - Support Information28

About the Utility28

Index

Getting Started

1

ProSafe® Smart Control Center

The ProSafe® Smart Control Center enables discover of, and remote management of NETGEAR equipment.

This chapter contains the following topics:

- **Smart Control Center Installation**
- **Discovering Devices**
- **Utility Features Overview**
- **Uninstall the Utility**

Smart Control Center Installation

For easy device management, install and use the ProSafe® Smart Control Center Utility. The utility is on the Resource CD shipped with Smart Control Center switches.

Note: The utility is only supported on Microsoft Windows and can be installed on any Windows PC(s) on the network containing the switches to be managed.

If an earlier version of the utility already exists on the PC, the newer version replaces the older version. Newer versions of the utility are backwards-compatible, and support all previously released Smart switches. If the version of the utility you are trying to install is older than the one already installed on the PC, the installation will not be performed.

To install the utility:

1. Insert the Resource CD that came with your switch into the PC that you will use to manage your switches. The Resource CD home page displays.

Resource CD pages, and the installation guide for the switch can be displayed in several languages. Use the pull-down menu in the upper right corner of the Resource CD home screen to select the desired language.

The utility uses the network programs Adobe AIR to process network commands. If not already installed on your PC, Adobe AIR will also be installed, and placed in your program directory.

2. Click the **Install NETGEAR ProSafe Smart Control Center Utility** link to install the program on your PC.

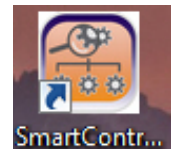
Note: The utility name may vary slightly between different Smart Control Center switch models.

- Follow the prompts **on the InstallShield Wizard until setup completes.**



The installation copies the utility program to a directory called **\Program Files\Smart Control Center**, and places a utility icon on the PC desktop.

The Adobe AIR programs may be used by other network applications and may already be installed on your PC.



If the Adobe AIR program is already installed, an “already installed” message displays. If there is a newer version, you will be prompted to update it. Click **Close** to end the Adobe AIR portion of installation.

- Installation is complete.

When the **InstallShield Wizard Completed** screen displays, check the box to launch the utility or just click **Finish** if you do not want to launch the utility at this time. Use the utility icon on your desktop to launch the utility in the future.



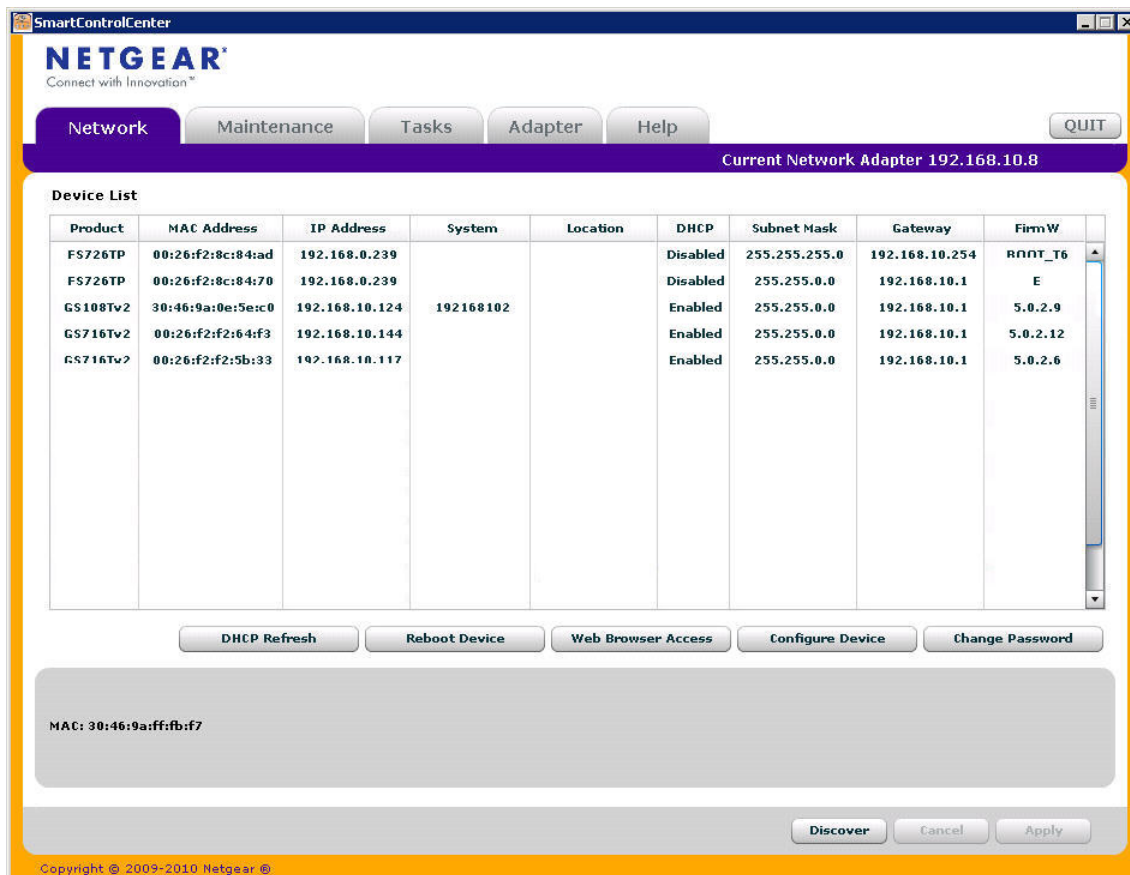
Discovering Devices

When launched, the utility immediately searches the network for network devices.

Note: Local PC firewall applications such as Symantec Endpoint Protection can prevent the utility from communicating with the switches. If the utility is unable to discover your switches and you are using a local firewall, you will need to turn off the firewall function in order for discovery to work.

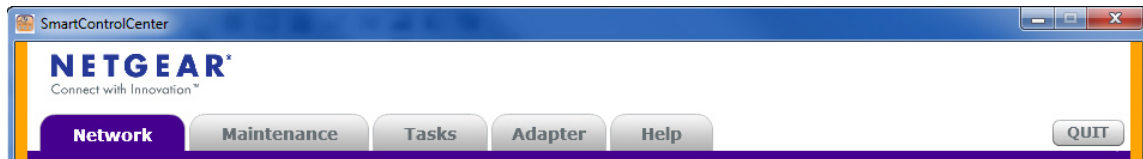
Within a few seconds the utility discovers and lists all devices in your network or in the same broadcast domain. Discovery will continue through the network until blocked by a router or firewall.

The discovered devices are displayed as shown below. You can now select a device to configure or display its status.



Utility Features Overview

Smart Control Center provide status and support information for all your NETGEAR network devices. The tabs across the top of the interface provide access to these features.



Network

DHCP Refresh - allows you to refresh the DHCP connections

Reboot Device - allows you to reboot the device

Web Browser Access - Log in to devices using a web browser instead of the interface

Configure Device - allows you to configure device settings

Change Password - allows you to change the administrator password

See [Chapter 2, Network](#) for details on these features.

Maintenance

Upload Configuration - allows you to upload configurations.

Download Configuration - allows you to download configurations.

Download Firmware - allows you to download firmware.

See [Chapter 3, Maintenance](#) for details on these features.

Tasks

Delete Prior Task - allows you to delete the previous task.

Delete One Task - allows you to delete one task at a time.

Reschedule - allows you to reschedule tasks.

See [Chapter 4, Tasks](#) for details on these features.

Adapter

Provides information about the adapters on the system.

See [Chapter 5, Adapter](#) for details on these features.

Help

Online Help - provides online access to technical support information and this manual.

About - provides version and copyright information.

See [Chapter 6, Help](#) for details on these features.

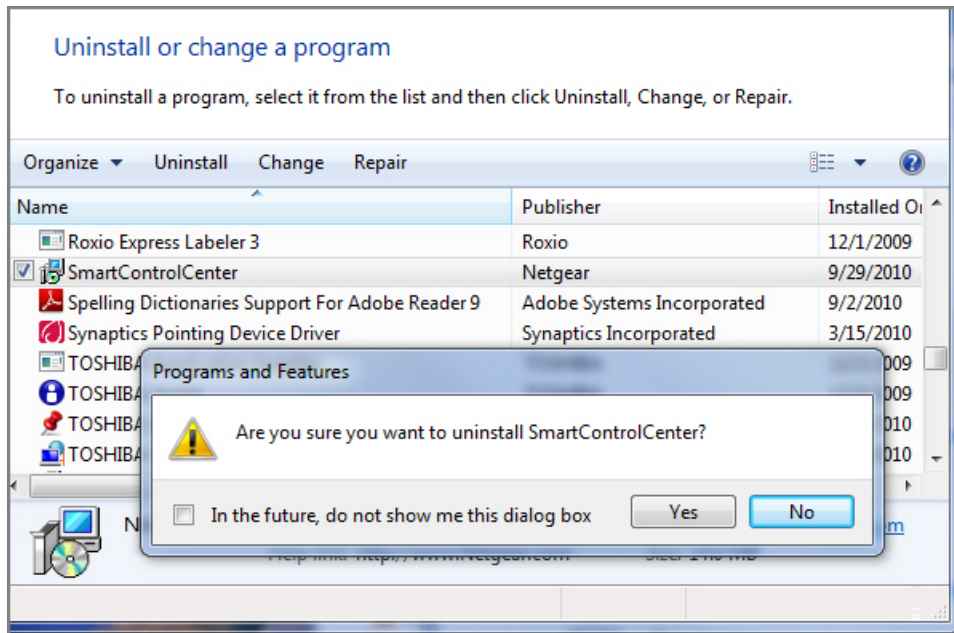
Quit

Exits the Smart Control Center utility.

Uninstall the Utility

To uninstall the utility:

1. Use the Add or Remove Programs command on your PC.
Go to **Start > Control Panel > Add or Remove Programs**
2. Select **Smart Control Center** and click Change/Remove.
3. When you are asked if you want to uninstall the selected application, click **Yes**.



The Network tab lets you select a switch to manage, display general information about the switch, perform basic switch maintenance, and monitor data flow through the switch.

This chapter contains the following topics:

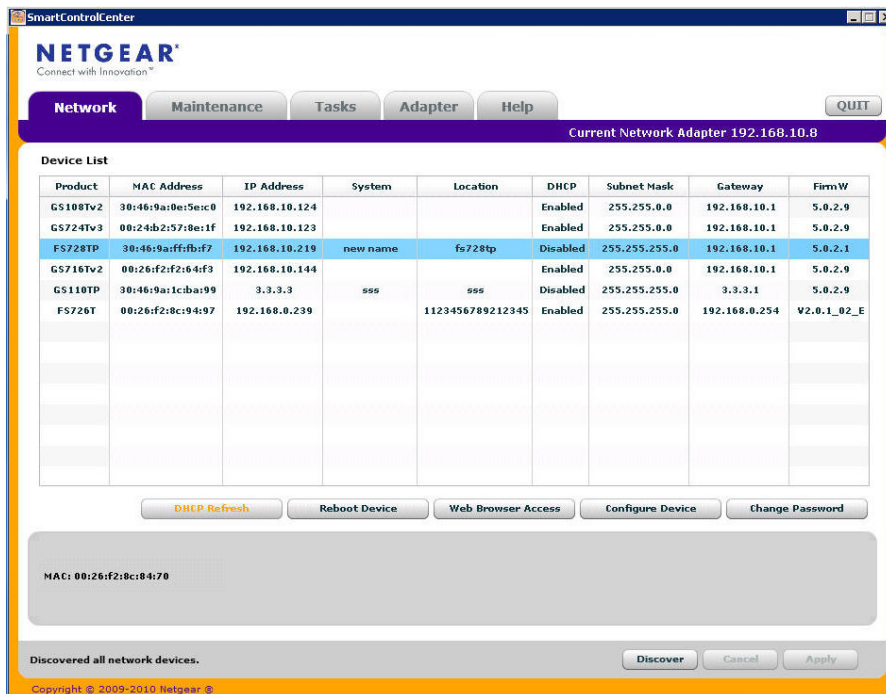
- **DHCP Refresh**
- **Reboot Device**
- **Web Browser Access**
- **Configure Device**
- **Change Password**

Network Features

All features have default settings. You do not need to configure any settings in order to use the Smart Control Center.

DHCP Refresh

DHCP Refresh allows you to renew the IP connection of a selected Smart Switch.



Reboot Device

Reboot Device allows you to reboot the selected device. It also supports dual firmware images. Select either the primary or secondary radio button to show the desired interface.



WARNING!

Rebooting the device will briefly disrupt network traffic through the device.

The screenshot shows the SmartControlCenter web interface. The top navigation bar includes tabs for Network, Maintenance, Tasks, Adapter, and Help. The current network adapter is 192.168.10.8. Below the navigation bar is a table titled 'Device List' with columns: Product, MAC Address, IP Address, System, Location, DHCP, Subnet Mask, Gateway, and FirmW. The table contains several entries, with the first two highlighted in blue. Below the table is a row of buttons: DHCP Refresh, Reboot Device (highlighted with a mouse cursor), Web Browser Access, Configure Device, and Change Password. At the bottom, there is a 'Run FW' section with a 'MAC: 00:24b2de19a1a4' label, two radio buttons for 'Primary' and 'Secondary' (with 'Secondary' selected), a 'Current Password:' label, and a password input field. 'Cancel' and 'Apply' buttons are at the bottom right.

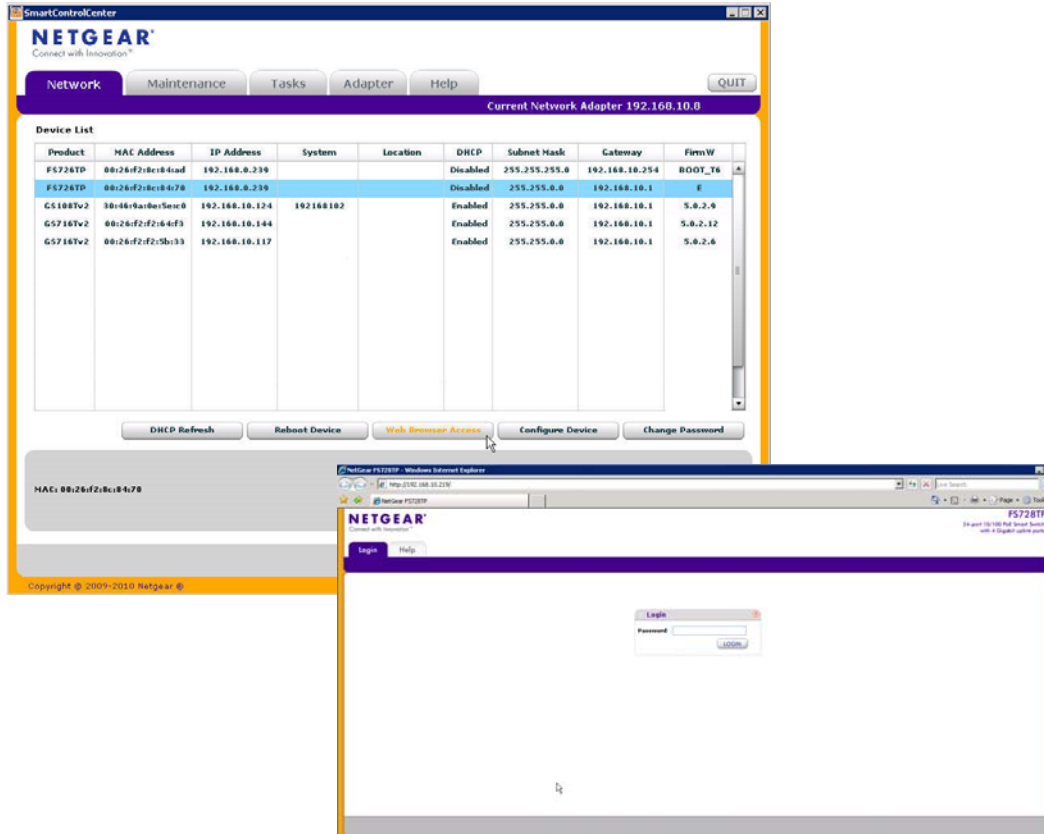
Product	MAC Address	IP Address	System	Location	DHCP	Subnet Mask	Gateway	FirmW
FS726TP	00:26:f2:8c:84:ad	192.168.0.239			Disabled	255.255.255.0	192.168.10.254	BOOT_T6
FS726TP	00:26:f2:8c:84:70	192.168.0.239			Disabled	255.255.0.0	192.168.10.1	E
GS108Tv2	30:46:9a:0e:5e:c0	192.168.10.124	192168102		Enabled	255.255.0.0	192.168.10.1	5.0.2.9
GS716Tv2	00:26:f2:f2:64:f3	192.168.10.144			Enabled	255.255.0.0	192.168.10.1	5.0.2.12
GS716Tv2	00:26:f2:f2:5b:33	192.168.10.117			Enabled	255.255.0.0	192.168.10.1	5.0.2.6
GS108Tv2	00:24b2de19a1a4	192.168.10.107	192168106		Enabled	255.255.0.0	192.168.10.1	5.0.2.13

To reboot the selected device:

1. From the **Network** tab, select the device you want to reboot.
2. Click the **Reboot Device** button.
3. Select either the **Primary** or **Secondary** firmware radio button.
4. Enter the current password.
5. Click **Apply**.

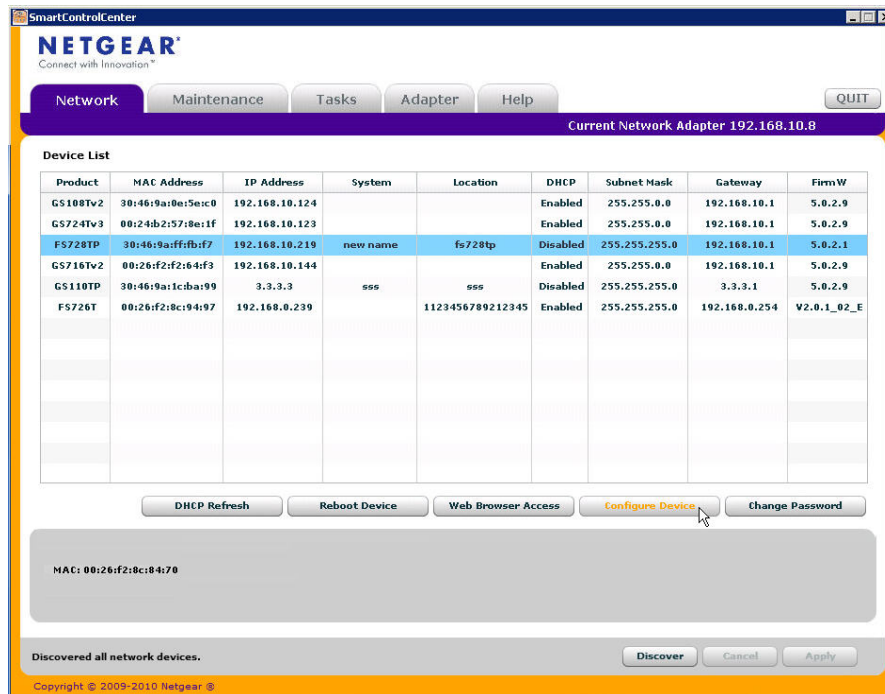
Web Browser Access

Web Browser Access is a way to log in to devices using a web browser. Use the same user name and password as you normally would to log into the Smart Control Center.



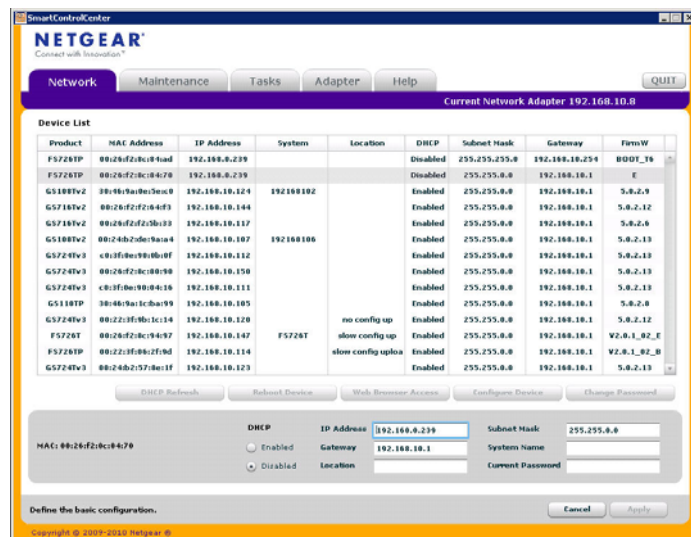
Configure Device

Configure Device allows you to configure device settings.



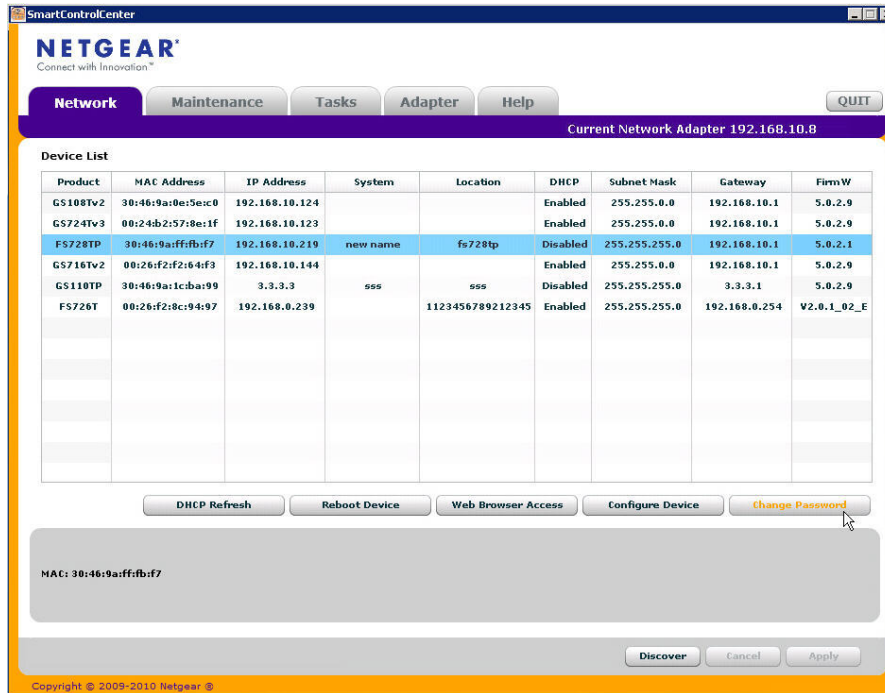
To configure a device:

1. Select the device.
2. Click **Configure Device**.
3. Set the following options:
 - a. DHCP (Dynamic Host Configuration Protocol)
 - enable
 - disable
 - b. IP Address
 - c. Gateway
 - d. Location
 - e. Subnet Mask
 - f. System Name
 - g. Current Password
4. Click **Apply**.



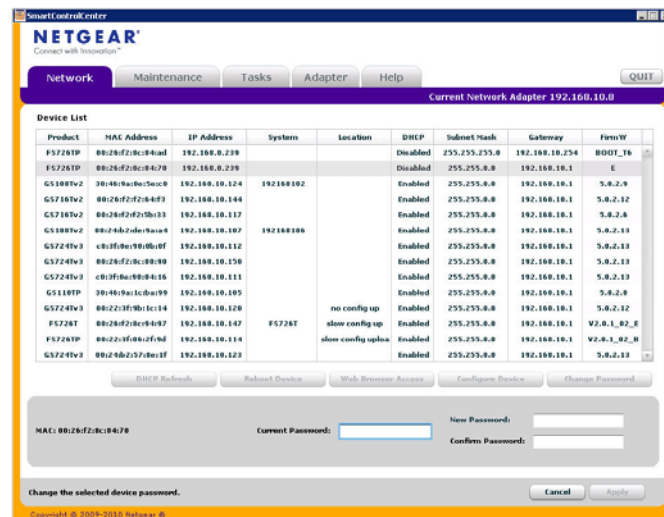
Change Password

Change Password allows you to change the password.



To change a password:

1. Select the device.
2. Click **Change Password**.
3. Enter the current password.
4. Enter the new password.
5. Re-enter to confirm the new password.
6. Click **Apply**.



3. Maintenance

3

This chapter contains the following topics:

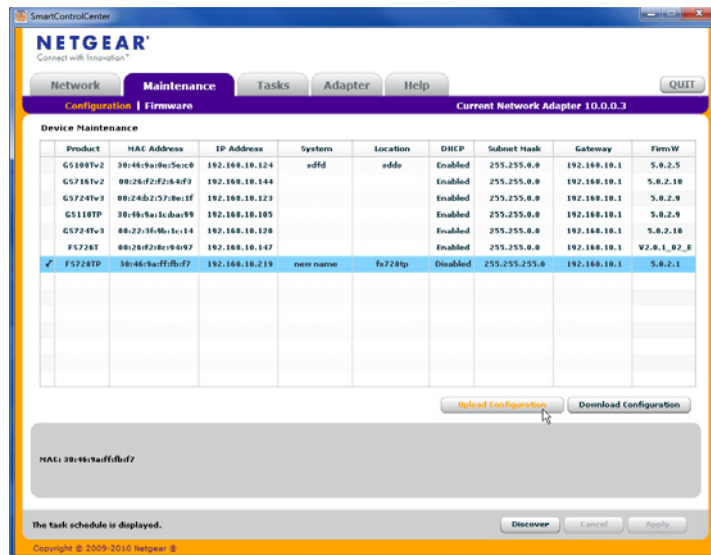
- **Configuration**
- **Firmware Upgrade**

Configuration

The configuration option allows you to upload the configuration of the selected Smart Switch or save the configuration settings to a selected Smart Switch. Be sure to check the progress of the configuration upload or download from the Tasks tab.

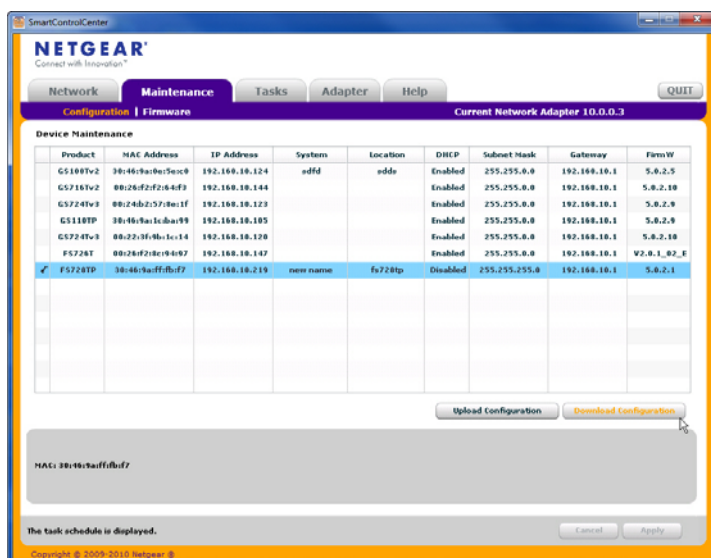
Upload Configuration

Upload configuration is used to save a back up copy of the switch's configuration to the PC.



Download Configuration

Download configuration is used to restore a configuration file that is saved on the PC onto the switch.



Firmware Upgrade

Note: After firmware downloading is complete, the device automatically reboots. This will briefly disrupt network traffic through the device.

To upgrade the firmware you must first download a firmware upgrade file for the selected device from the NETGEAR support web site to your PC. You can then download the firmware to either Smart Switch primary or secondary storage.

You can check the progress of the firmware upgrade from the Tasks tab.

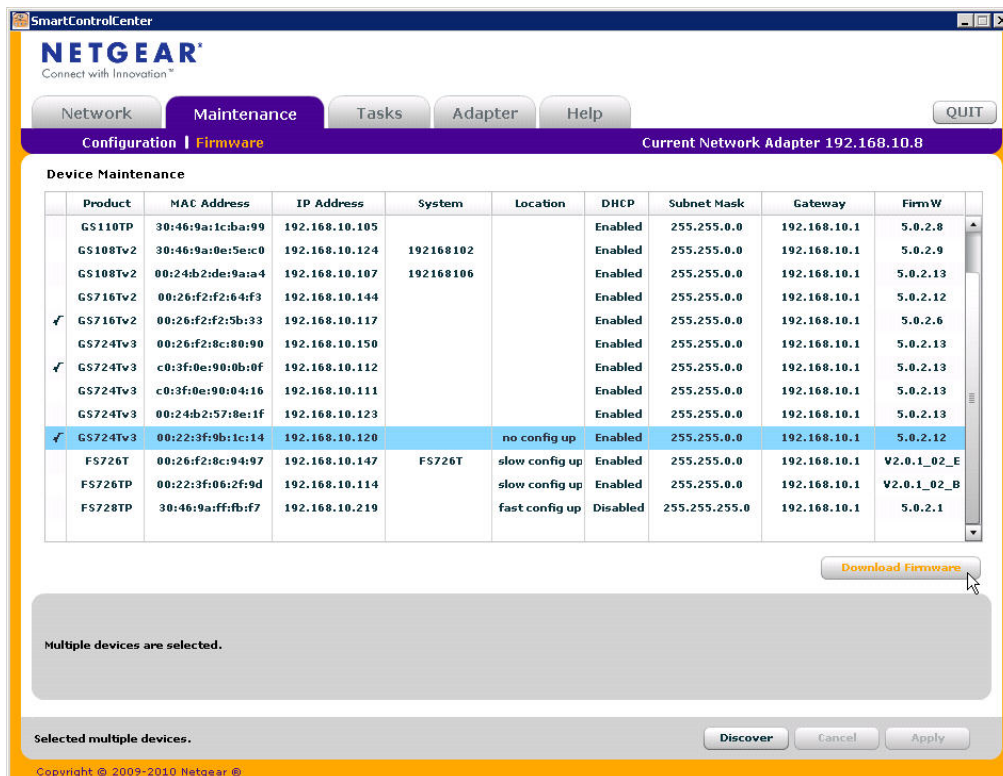
To upgrade firmware on the selected switch:

1. Select **Maintenance > Firmware Upgrade**.

The Firmware Upgrade dialog will display.

2. Click the Browse button and navigate to the location on your PC containing the firmware upgrade file.
3. Select the upgrade file and click Apply.

The firmware will be downloaded from your PC to the device and the device automatically reboots.



This chapter contains the following topics:

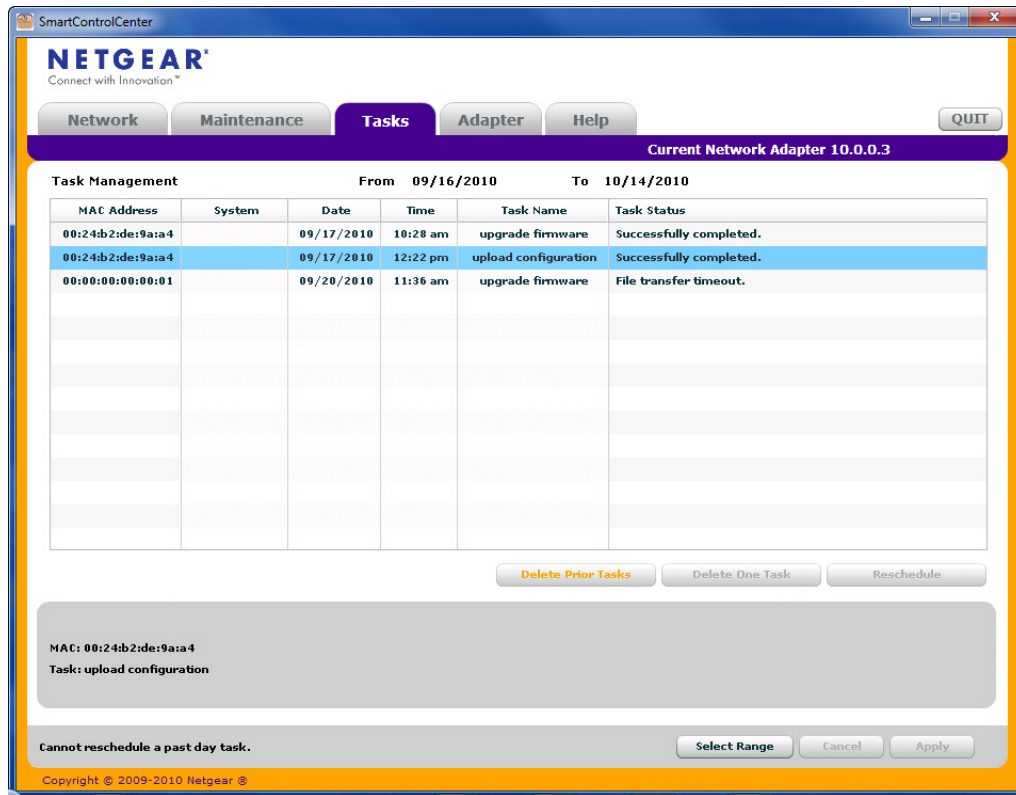
- **Delete Prior Tasks**
- **Delete One Task**
- **Reschedule Task**

Delete Prior Tasks

Use this feature to delete older tasks.

To delete prior tasks:

1. Select the **Tasks** tab.
2. Select the task that is right below the tasks you want to delete.
The selected task is NOT deleted; only the tasks above the selected task are deleted.
3. Click the **Delete Prior Task** button.
All tasks above the selected task are deleted.
4. Confirm **yes** or **no**.
5. Click **Apply**.

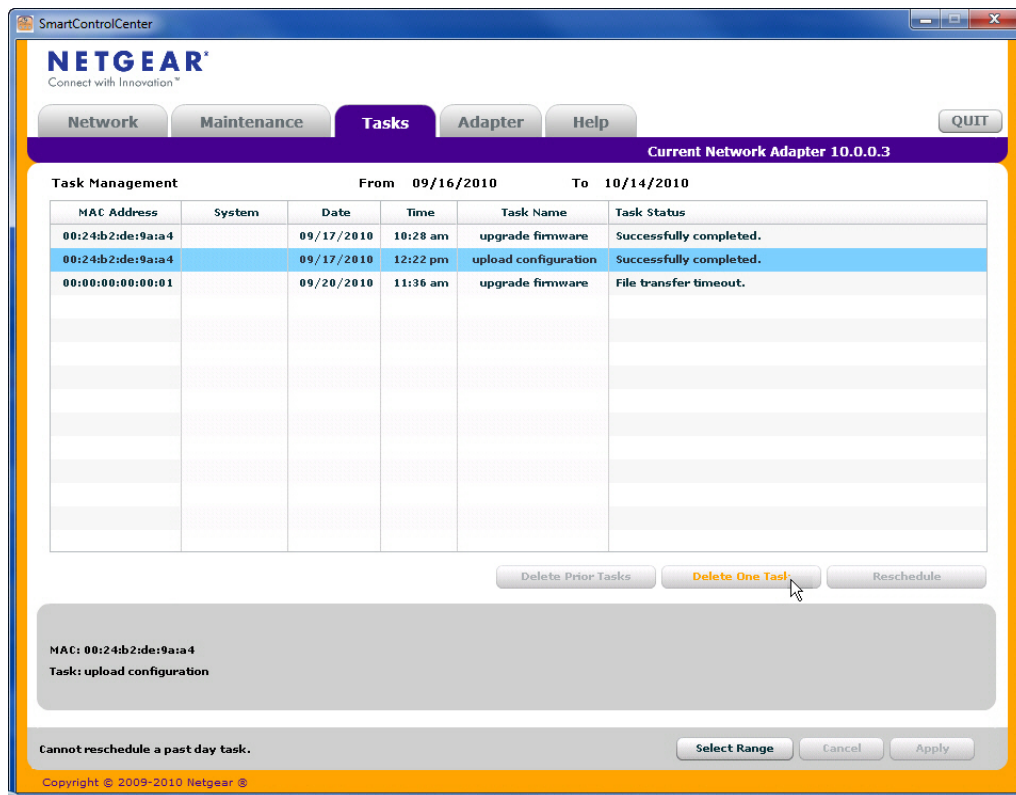


Delete One Task

Use this feature to delete individual tasks.

To delete a task:

1. Select the **Tasks** tab.
2. Select the task from the list.
3. Click the **Delete Task** button.
4. Confirm **yes** or **no**.
5. Click **Apply**.

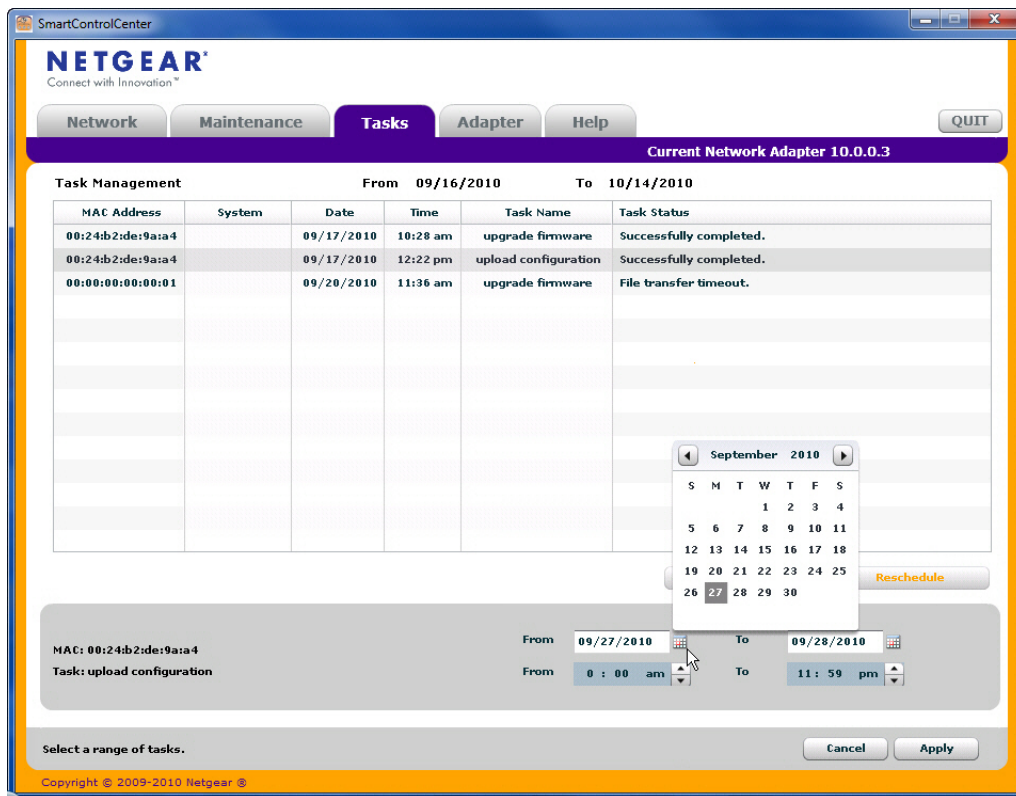


Reschedule Task

Use this feature to reschedule tasks.

To reschedule a task:

1. Select the **Tasks** tab.
2. Select a task from the list.
3. Click the **Reschedule Task** button.
4. Set the date parameters:
 - a. From
 - b. To
5. Set the time parameters:
 - a. From
 - b. To
6. Confirm **yes** or **no**.
7. Click **Apply**.



5. Adapter

5

This chapter contains the following topics:

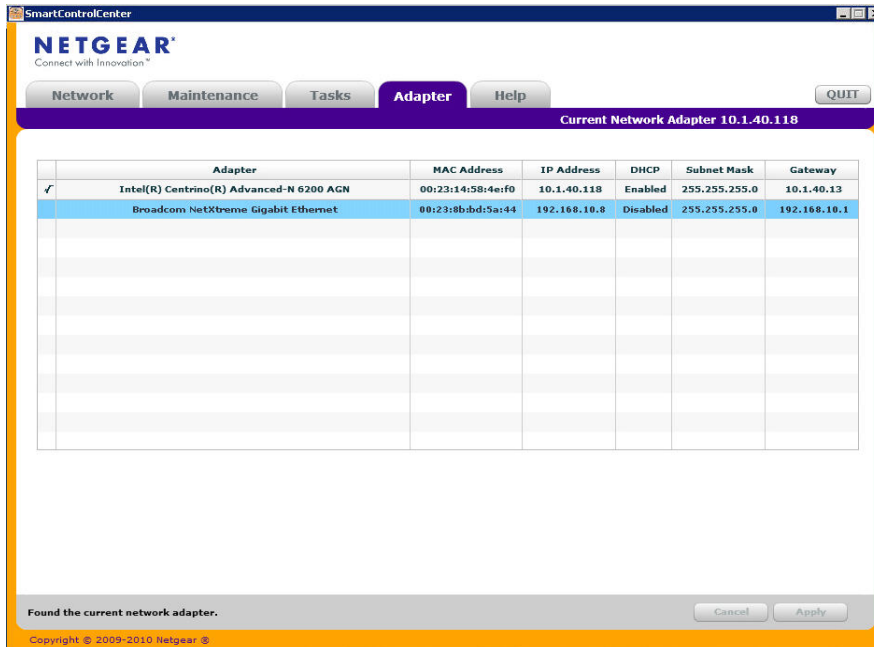
- **Adapter Overview**

Adapter Overview

This feature allows you to specify the network adapter on the PC to be used to discover and manage the device. It is not a list of all adapters in your network, but rather a list of network adapters installed on the computer where the SmartControlCenter is runningd.

To see a list of all adapters on your network:

1. Click the **Adapter** tab on the **Smart Control Center** interface.



This chapter contains the following topics:

- **Online Help**
- **User Guide**
- **Support Information**
- **About the Utility**

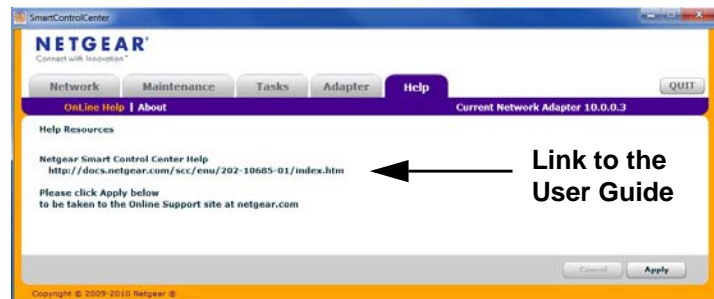
Online Help

The Help tab provides access to the NETGEAR Support web site, and to the latest copy of the Smart Control Center user guide (this manual).

User Guide

If the PC running the utility program has access to the internet, selecting **User Guide**, then clicking **Apply** will open the latest version of this manual. You can then download a copy to your PC.

After installing a new Smart Control Center you should check this web site for the latest version of this manual.



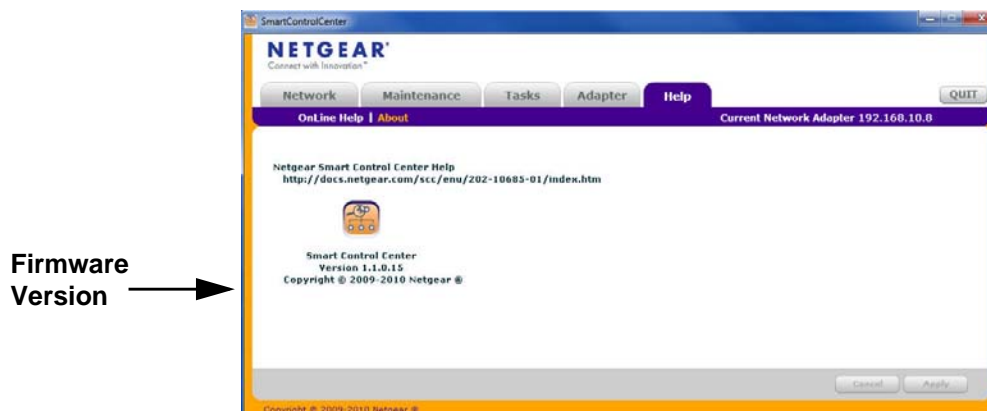
Support Information

If the PC running the utility program has access to the internet, you can display the support page for a selected switch. Selecting **Support**, then clicking **Apply** will open a NETGEAR support page for the selected switch model.

The support page provides access to the NETGEAR Knowledge Base, additional documentation, downloads, and product forums for the selected product.

About the Utility

Selecting **About the Utility** on the **Help** tab displays the utility software version for the Smart Control Center Configuration Utility.



Index

A

about **28**
access, web browser **15**
adapter **9**
adapters **26**
Adobe AIR **7**

C

change password **17**
configuration, download **19**
configuration, upload **19**
configure device **16**

D

delete task **22, 23**
device discovery **8**
DHCP **13**

F

features **9**
firewall applications **8**
firmware upgrade **20**

H

Help **10**
help **28**

I

installation **6**
InstallShield Wizard **7**

M

maintenance **9**

N

network features **13**

P

password **17**

Q

quit **10**

R

reboot **14**
reschedule task **24**

S

support **28**

T

tasks **9**
technical support **2**
trademarks **2**

U

user guide **28**
utility, uninstall **11**

W

web browser **15**